

Finderne Community Council

Community Consultation

***Clash Gour & Berry Burn II
Wind farm developments***

Saturday 19th January 2019

Edinkillie Community Hall

Consultation outline

- ❖ Description of wind farm proposals
 - ❖ Clash Gour
 - ❖ Berry Burn II
- ❖ Summary of Environmental Impact evaluation
- ❖ Summary of Benefits
- ❖ Establishing a FCC “position”
 1. Discussion of impacts and benefits.
 2. Tea & Coffee
 3. Community opinion survey completion
- ❖ Feedback on Community opinion.

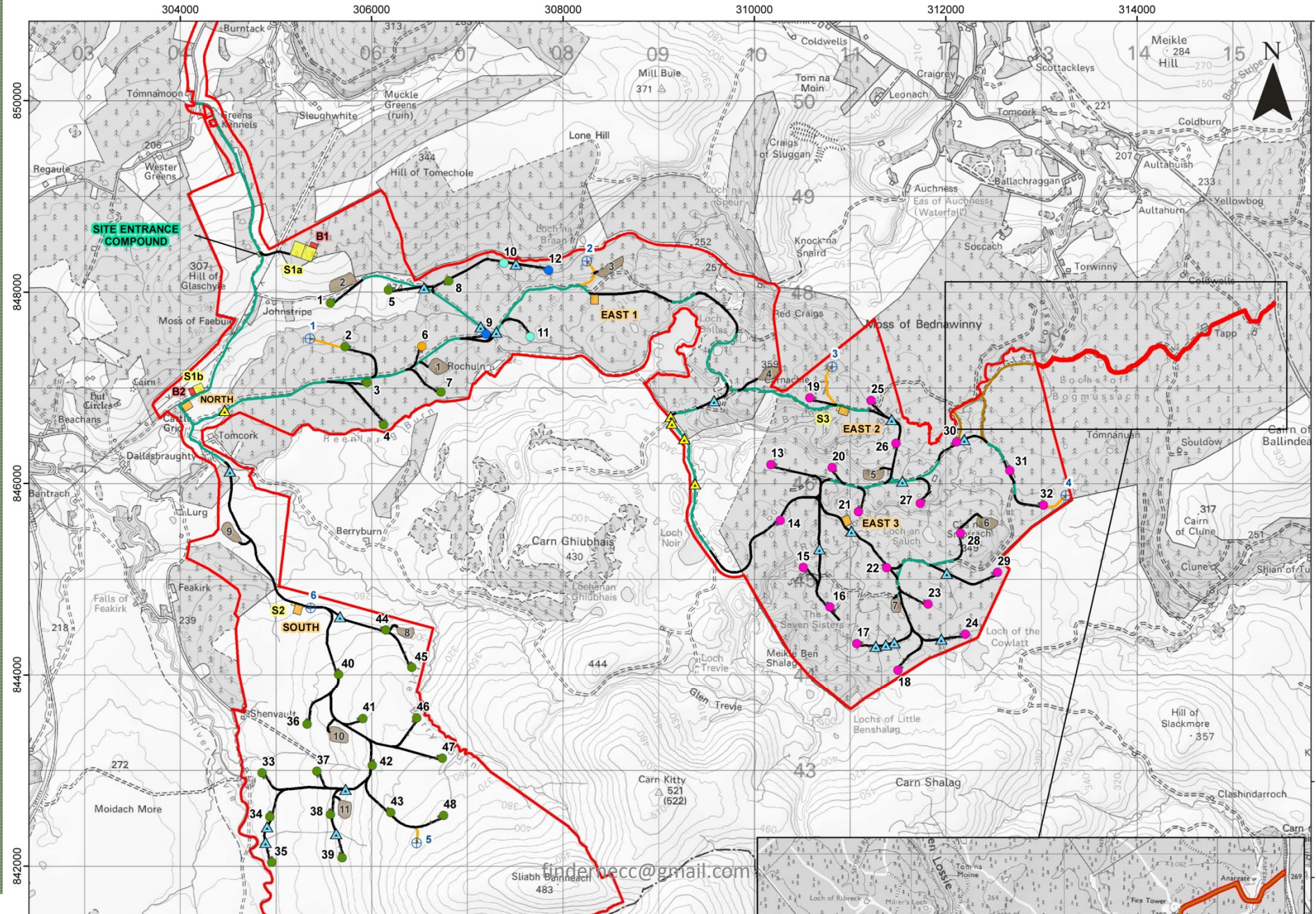
Clash Gour wind farm proposal

- ❖ Total of **48** turbines with a total rated capacity of **164-256MW**, depending on type, and height of turbines finally selected.
- ❖ **20** turbines of **176m** height & **28** turbines of between **130-149.9m** height.
- ❖ This application has been made direct to the Scottish Government under a **Section 36** process because generated output is **>50MW**.
 - ❖ Therefore The Moray Council is merely a “consultee” in the process and there is no statutory obligation to consult the FCC.

Status

- ❖ Consent application submitted
- ❖ The closing dates for comments on the application is 8th February 2019.

Clash Gour wind farm proposal



Berry Burn II wind farm proposal

- ❖ **10** turbines of **149.9m** height generating **42MW** power.
- ❖ Existing Berry Burn Wind Farm is 29 turbines of 100m tip height.
- ❖ Airvolution / Statkraft will be applying to the Scottish Government under a **Section 36** process by claiming that the combined generated output is >50MW.
 - ❖ Therefore The Moray Council is merely a “consultee” in the process and there is no statutory obligation to consult the FCC.

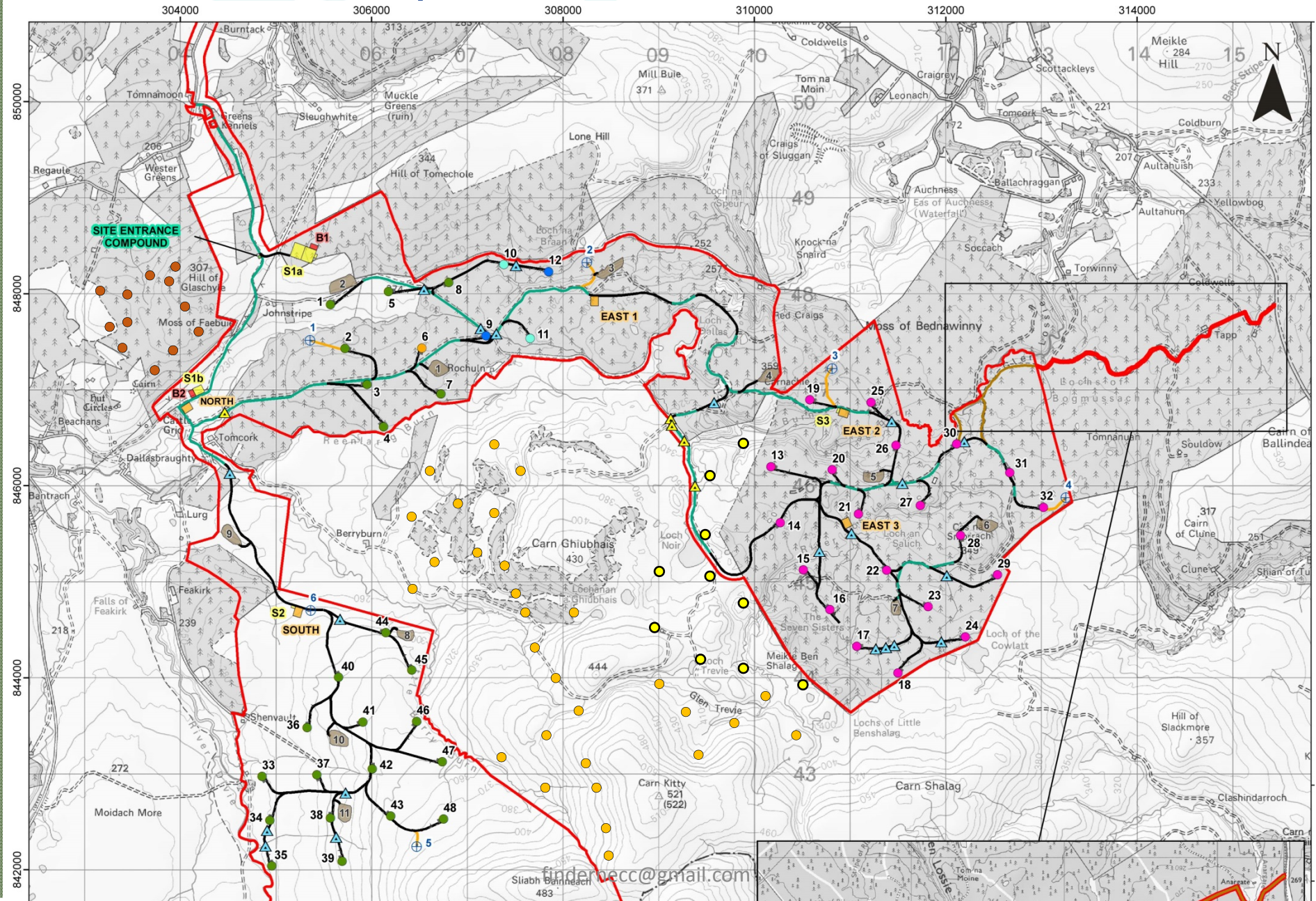
Status

- ❖ The scoping report has been submitted. This sets out the parameters for the EIA (Environmental Impact Assessment) which will be submitted with the section 36 planning application in due course.

Berry Burn II wind farm proposal



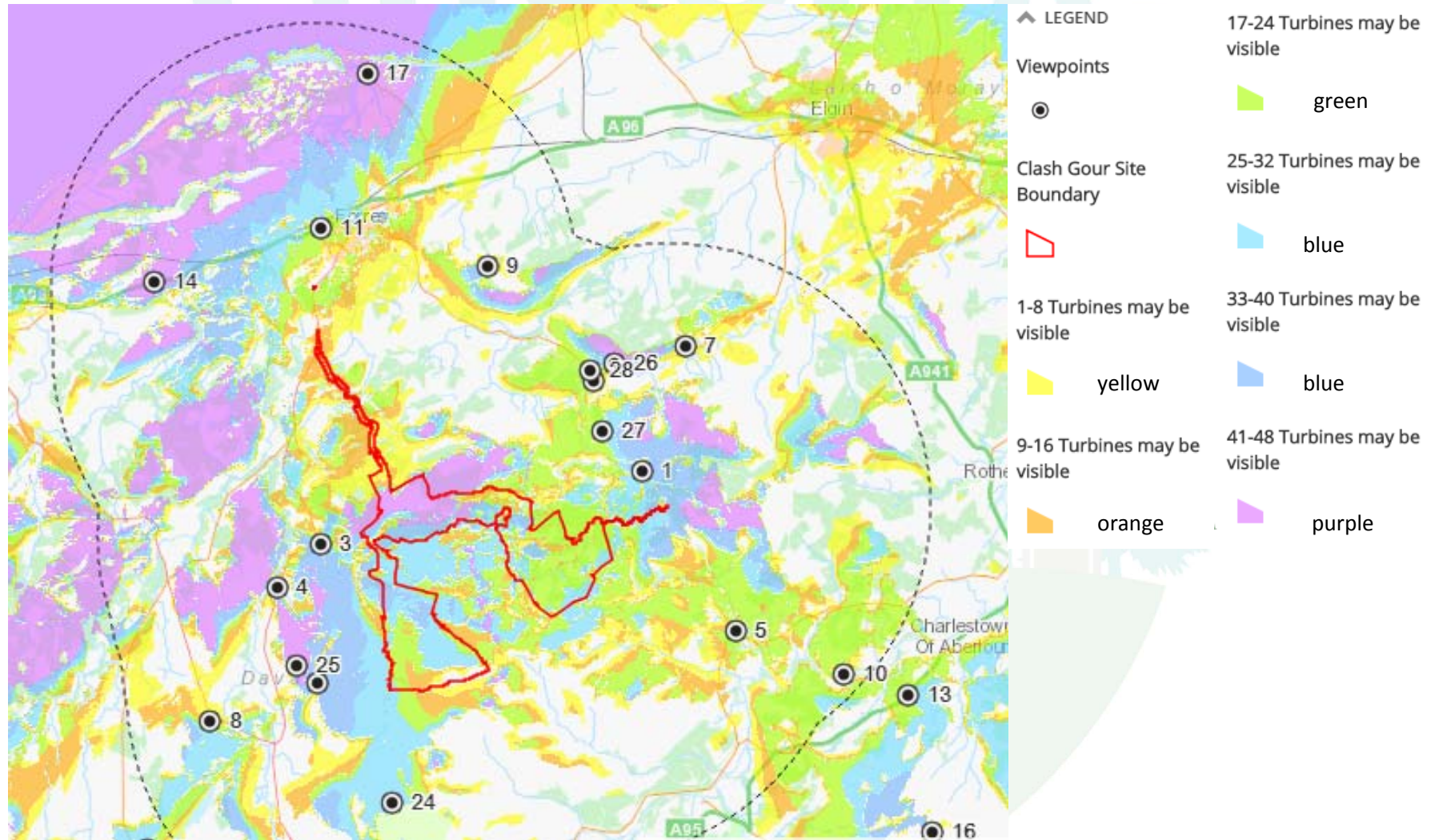
Accumulative map



Environmental Impacts – Clash Gour

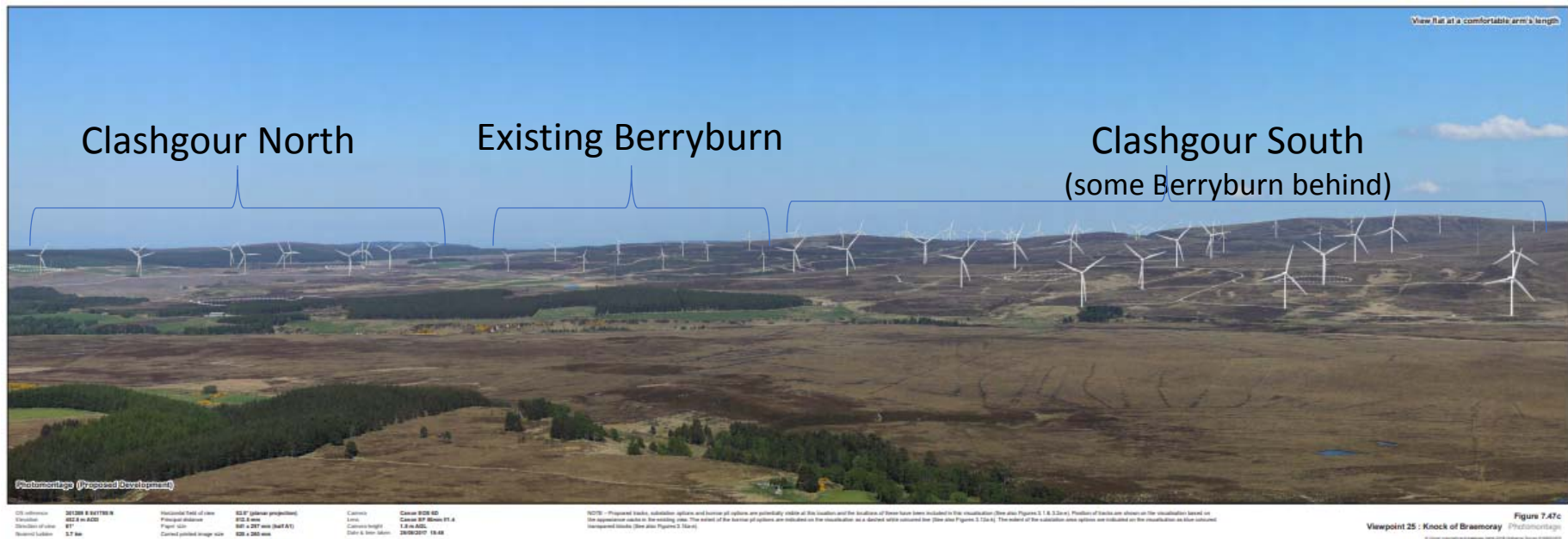
Topic	Clashgour impact	
Landscape and Visual	Visibility and Lighting	Lighting on turbines over 150m
Ecology	Mitigation by design	Forestry and Peat Plan
Ornithology	Mitigation by design	Plus Habitat Mgt Plan
Soils Water & Geology	Minimal impact	
Archaeology	none	
Noise and Vibration	Minimal impact	
Access & Traffic	Minimal impact	Uses Berryburn routes
Socioeconomics/Tourism	+ve economics/-ve tourism	Visual impact on Dava Way
Aviation	Mitigated by design	Infra-red lighting

Landscape and Visual – Clash Gour Zone of Visibility



Landscape and Visual – Clash Gour Daytime

Finderne
Community Council



View from Knock of Braemoray

findernecc@gmail.com



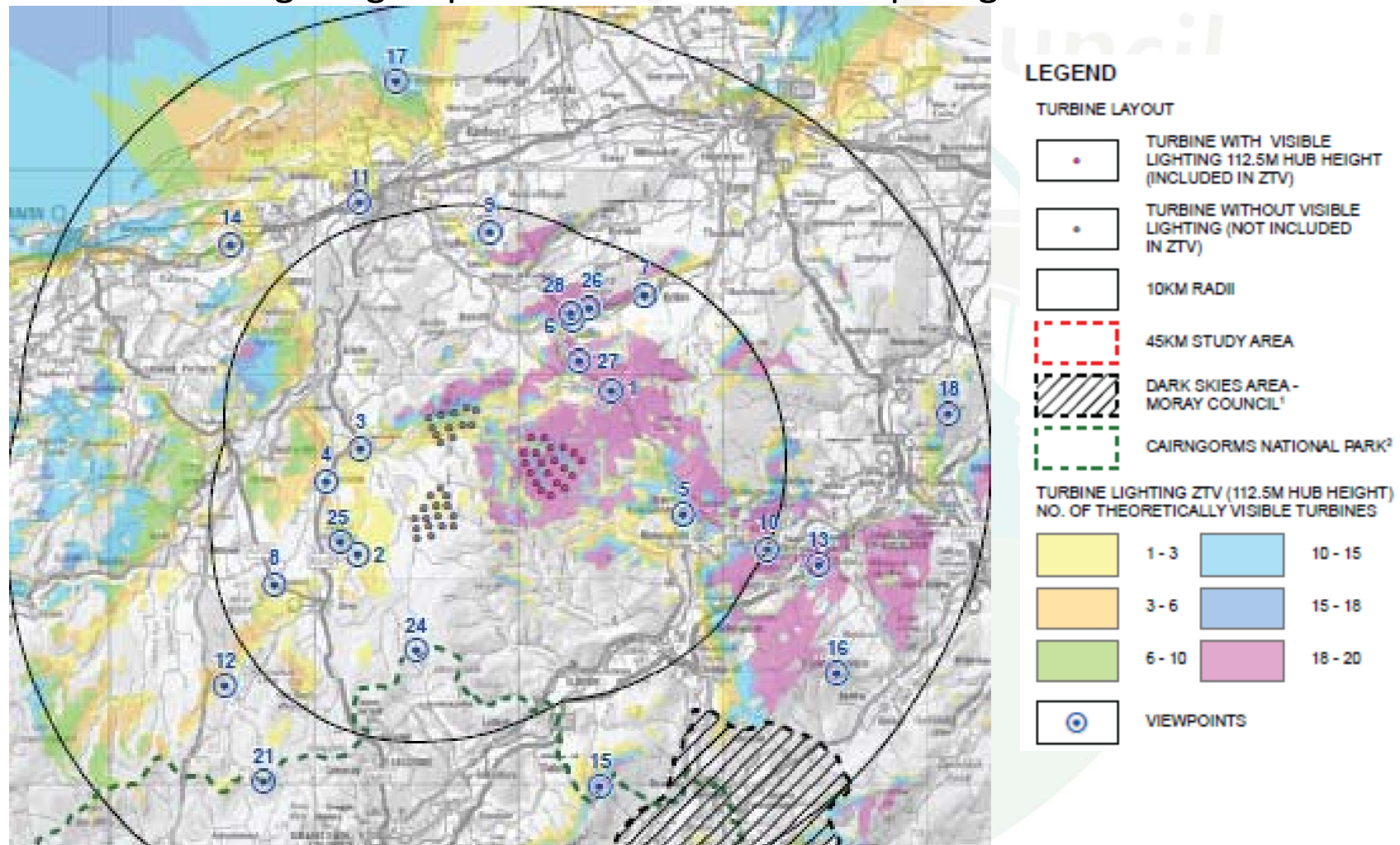
Landscape and Visual – Clashgour Daytime



View from Dallas – Knockando Road
(showing envelope of rotation)

Landscape and Visual - Clashgour Night-time

- ❖ Permanent lighting required on turbines with tip height over 150m



Landscape and Visual - Clashgour Night-time

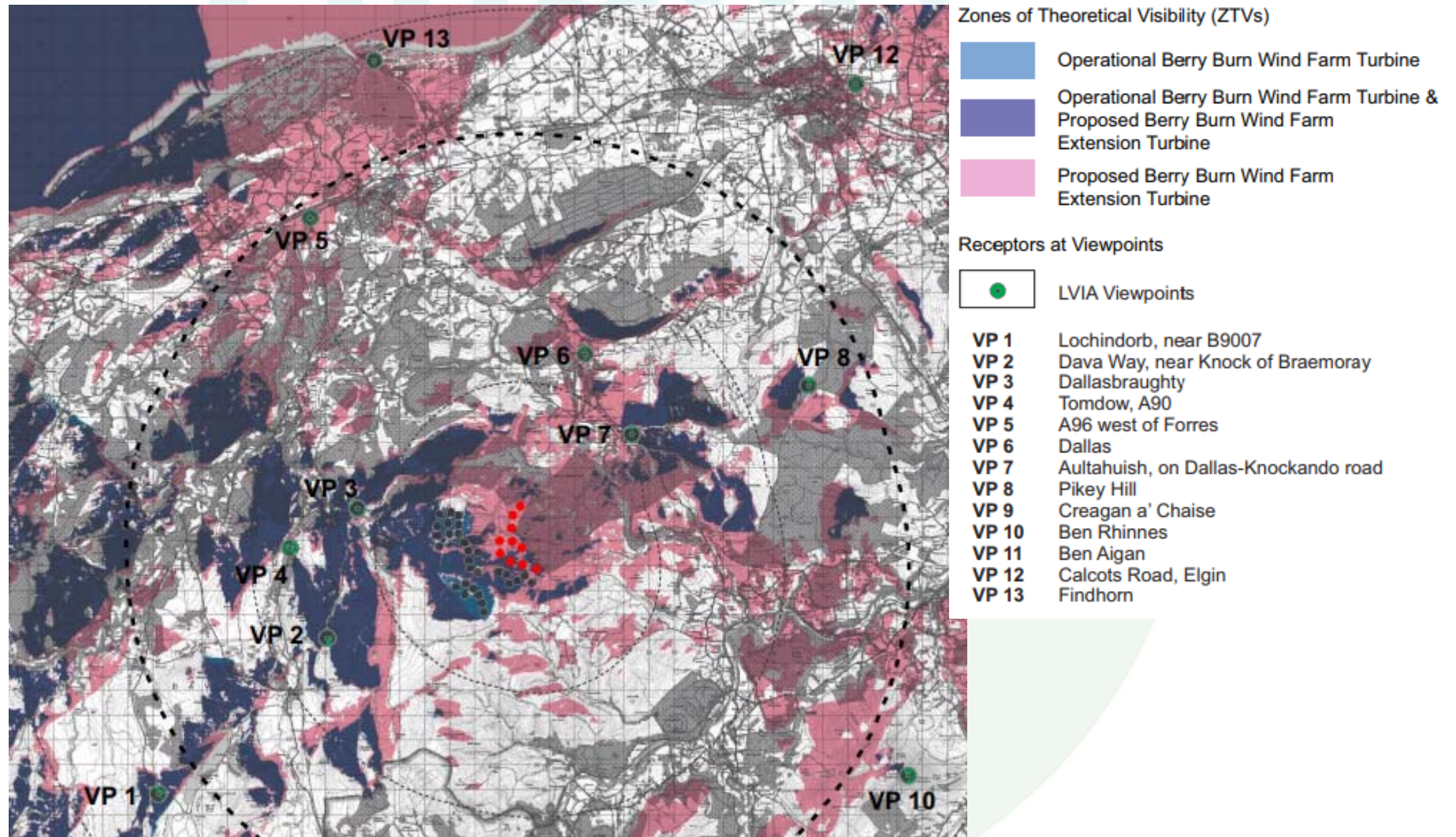
❖ Option B

- ❖ Limits tip height to avoid lighting requirement
- ❖ Generation (hence income) reduced by 5%

Proposed Development	Scenario B
<ul style="list-style-type: none">• 164.2MW to 225MW• Could be up to 256MW• 570 – 710 GWh generation per year• 150,268 – 187,664 homes powered• Carbon Payback period 2.3 years	<ul style="list-style-type: none">• 164.2MW to 225MW• 543 – 675 GWh generation per year• 144,942 – 178,281 homes powered• Carbon Payback period 2.4 years

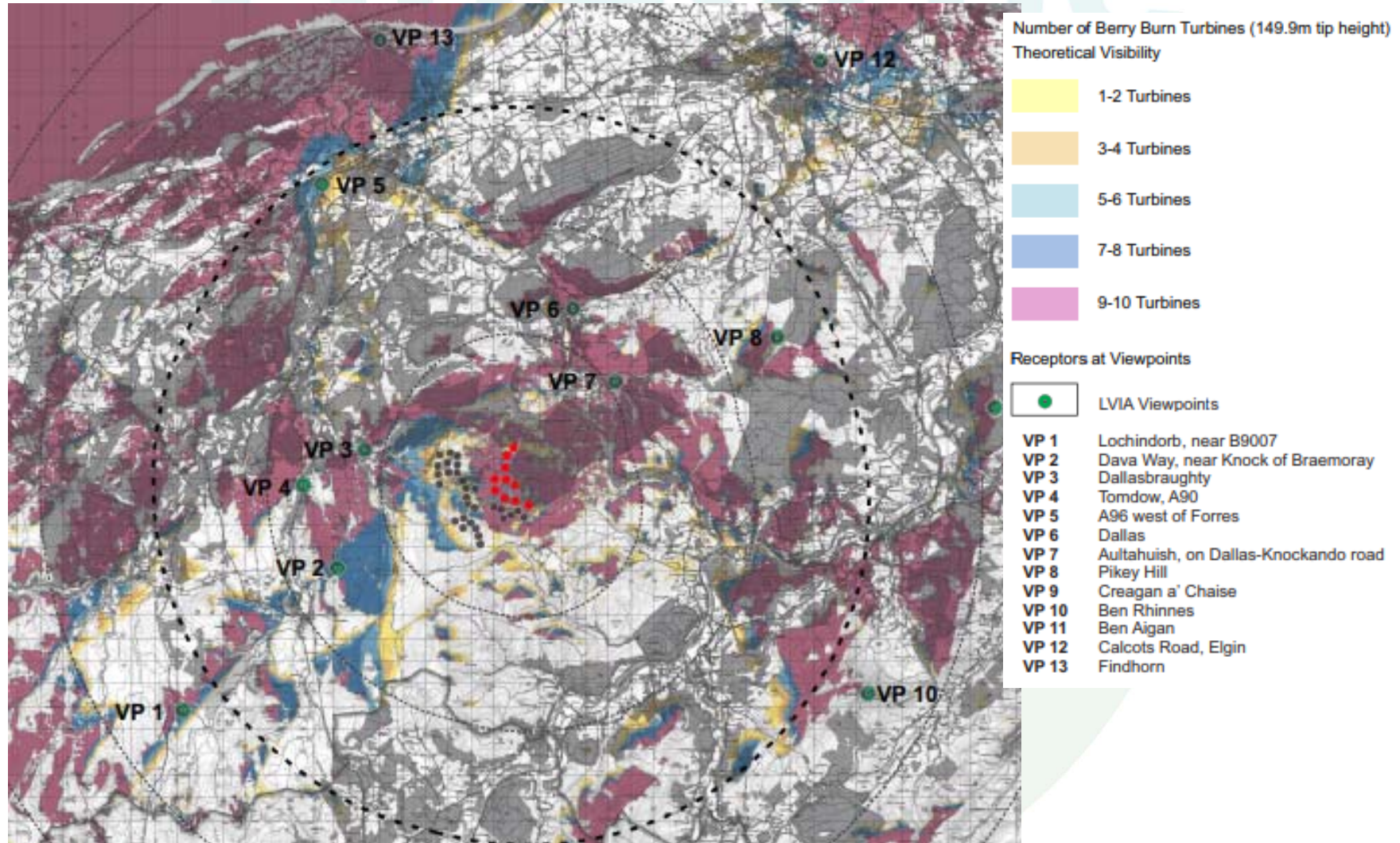
Berry Burn II wind farm proposal – Zone of Visibility

- ❖ Both new and existing turbines



Berry Burn II wind farm proposal – Zone of Visibility

- ❖ Showing number of turbines visible



Ornithology – Clash Gour

Mitigation by design

- ❖ Red-throated Diver
 - Turbine free zone 500m from breeding lochan, and corridor for flight path to/from Moray Firth
- ❖ Raptors
 - Turbines > 500m from known nest sites
- ❖ Capercaillie
 - Site boundary modified to avoid location where Capercaillie have been recorded
- ❖ Osprey
 - Turbine free zone 500m from Loch Dallas
- ❖ Black Grouse
 - Turbine free zone 500m from recorded Lek sites

Habitat Management Plan

- ❖ Hen Harriers
 - Manage moorland to encourage nesting away from turbines, and discourage nesting close to turbine
- ❖ Red-throated Diver
 - Diver raft to promote breeding success

Aviation – Clash Gour

Issue	Solution
Lossiemouth Precision Approach Radar	Turbines positions and heights designed to avoid impact
Lossiemouth Air Traffic Control Primary Surveillance Radar	Technical solution by providing additional radar to mask turbines
Civil Aviation Authority requirements Permanent lighting if tip height >150m	Potential for radar activated lighting, but not approved for use
MoD Low flying requirements All turbines to be permanently lit	Infra-red lighting subject to MoD approval

- ❖ Permanent Lighting required for turbines > 150 tip height
- ❖ Infra-red lighting on all turbines, subject to MoD approval

Berry Burn II wind farm extension

Scoping Report

- ❖ No Environmental Impact Assessment yet

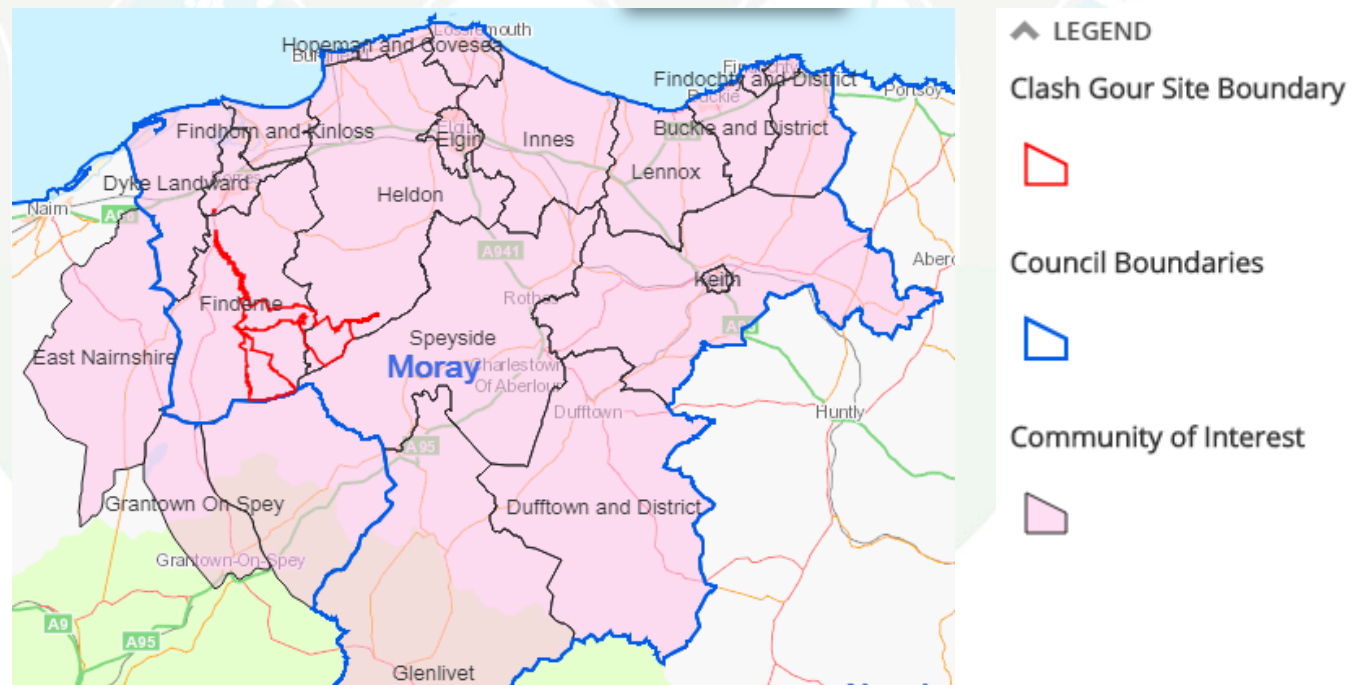
Scoping report - Noise

- ❖ The scoping report indicates that they do not believe the extension will cause the Berry Burn wind farm to exceed 35 decibels therefore they do not propose to monitor noise at this point.

Community Benefits – Clash Gour

Community Shared Ownership

- ❖ EDF will offer an opportunity for community shared ownership
- ❖ Profit sharing in proportion to contribution to capital cost with a cap of 5%
- ❖ Available to a “Community of Interest” including Community Councils and other bodies in Moray and some adjacent Highland areas
- ❖ Will be supported by advice from Local Energy Scotland



Community Benefits – Clash Gour

Community Benefit

- ❖ Community benefit funds to the value of £5000 per MW would be made available to the Community of Interest. This could generate between £821,000 and £1,125,000 per year over 30 years.
- ❖ Depending on how this is used the application calculates this could create up to 20 jobs in Moray
- ❖ It is not clear at this time how the Community Benefit would be administered

Economic benefit

- ❖ The proposed investment of £225M could generate 140 FTE jobs in Moray during the construction period.
- ❖ During the operations phase it is calculated the 14-19 FTE jobs could be created in Moray.

Community Benefits – Clash Gour

Enhanced path network

- ❖ Some additions sections of paths are planning in the eastern area of the site to link the turbine access tracks and existing tracks

Helps meet Scotland's renewable energy targets

- ❖ Includes 50MW of battery storage to help balance supply and demand

Community Benefits – Berry Burn II

- ❖ Potentially £210,000 per year, based on government recommendations
- ❖ Method of distribution not yet identified

General Discussion

Finderne
Community Council



findernecc@gmail.com



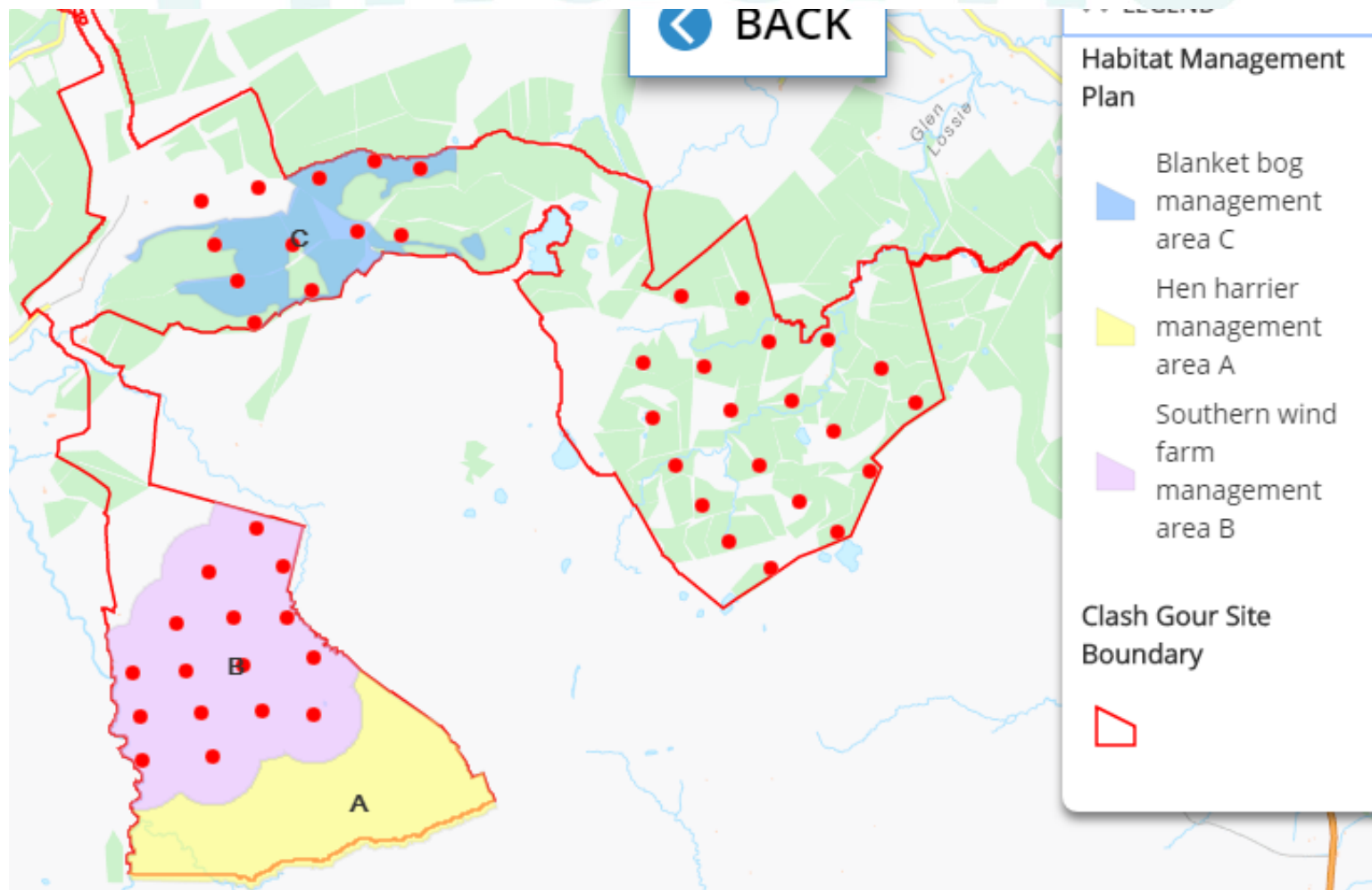
Enjoy a cup of Tea or Coffee



Please Complete our Survey

findernecc@gmail.com

Backup Slide – Habitat Management Plan



Backup Slide – Forestry Plan

- ❖ Area of Woodland – 1,715 ha
- ❖ Felling for construction – 377 ha (22%)
- ❖ Replanting – 299 ha
- ❖ Compensatory planting in other areas – 78ha

