

A detailed topographic map of the FINDERNE area, showing contour lines, green spaces, and a central town area. The map is overlaid with a red boundary line.

FINDERNE LOCAL PLACE PLAN DEVELOPMENT

Future FINDERNE Event Feedback Newsletter



unlocking the future



FINDERNE
Development Trust

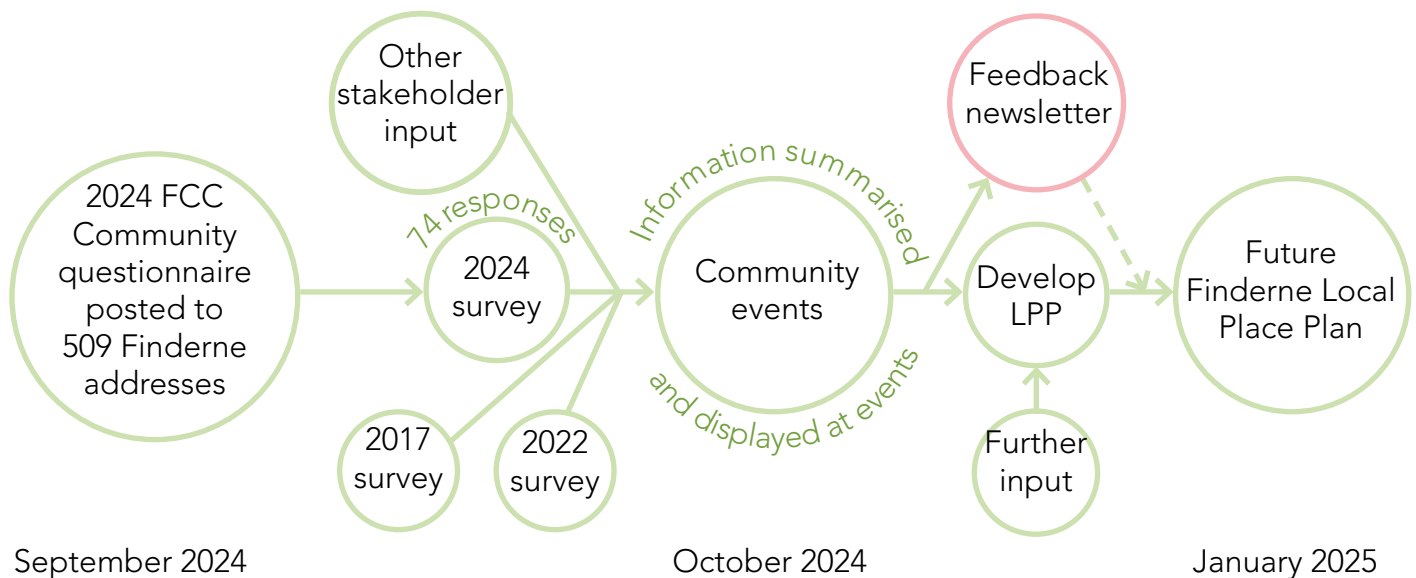
COLLECTIVE
ARCHITECTURE

Event Feedback Newsletter

Two community events were held on Tuesday 29th October at Edinkillie Village Hall and Wednesday 30th October at Rafford Village Hall to inform the Finnerne Local Place Plan development. The time-line graphic below illustrates the process to date. The information presented at these events summarises the information previously received from the community and other stakeholder questionnaires.

The purpose of this newsletter is to summarise the feedback received at the community events, share new ideas and key themes in each location. We would like to take this opportunity to thank you for coming to the events and taking the time to share your insight and ideas for your local area. For up to date information regarding collation of the Plan, please have a look on the Finnerne Community Council website. If you have any questions you can also contact us at:

engage@collectivearchitecture.co.uk



Photos from Edinkillie and Rafford

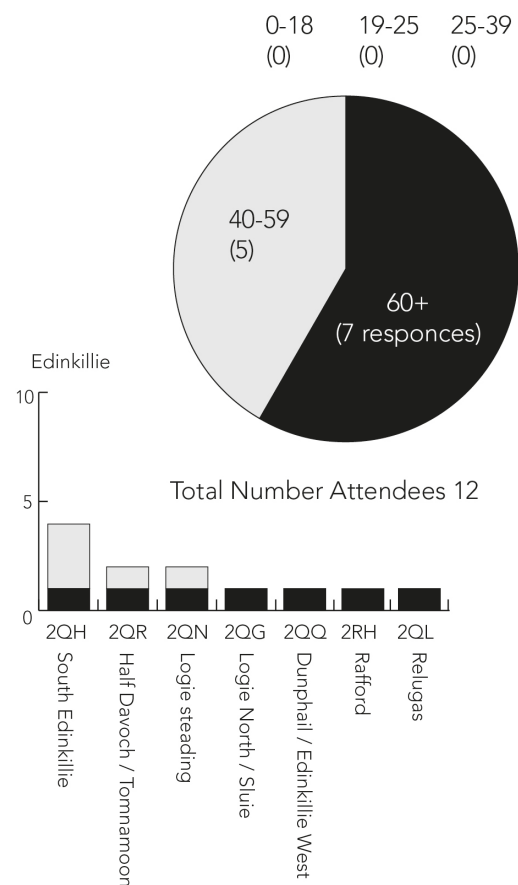
Who gave feedback?

These pie charts are created from the sign in sheet at the events. The sign in sheet was not filled out by every attendee, so this only provides an idea of the consultation demographic.

The majority of event attendees were over 60, it is worth noting that there were few to no young people in attendance.

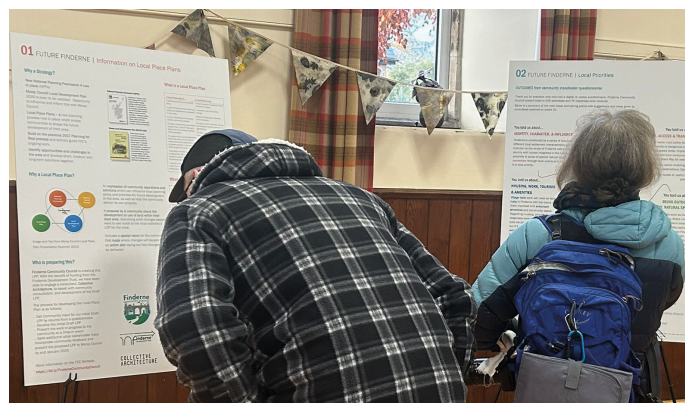
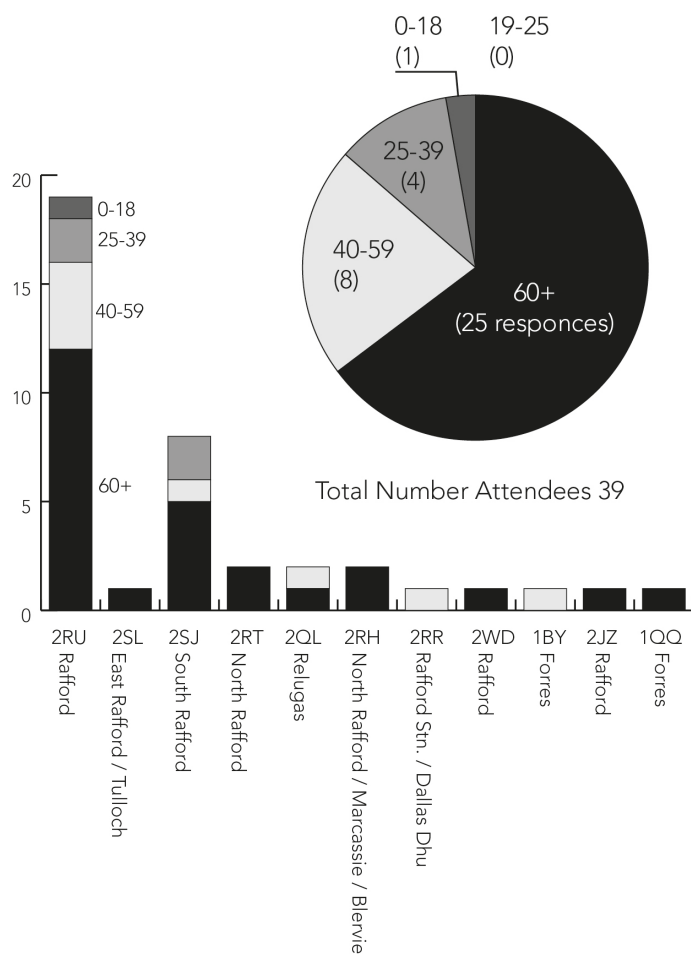
Edinkillie Event

What age are you?



Rafford Event

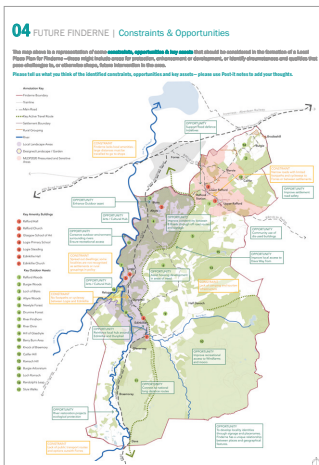
What age are you?



Qualitative Feedback at a Glance by Area

This summary is created from post it notes left on the presentation boards and conversations at the event. Comments are focused to the event locations however these represent the wider areas too.

Key ideas and comments in relation to information



At the Rafford event

- Improve access and awareness of the path network, ensuring access to key routes and paths.
- Safe active travel path to Forres, connecting upper and lower Rafford.
- Greater access to Dava way and local path network, connecting routes.
- Housing was discussed however there were mixed opinions in relation to further development.

At the Edinkillie event

- Options for affordable housing needed to create opportunities for young families and working people within the community
- Traffic calming measures required at Edinkillie hall
- Off-road footpath route between Edinkillie to Logie needed.

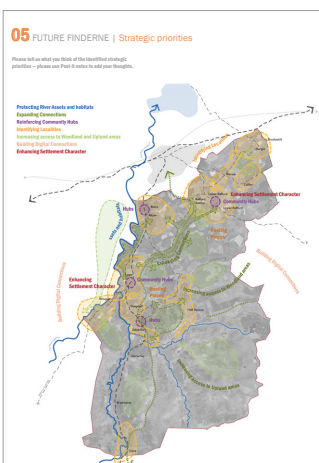


Moving around generally

- Poor connections across Ffinderne, path improvements to be made in key locations suitable for a range of users - improved signage and route planning would assist this.
- Recreation opportunities in access through windfarm areas.
- Routes and timetabling of the community bus.

Other ideas and comments

- Village halls are local assets. Both facilities could do with external improvements / play spaces suitable for a range of ages.
- Support for alternative uses for disused churches to be explored assuming they can be managed sustainably.
- Speeding was identified as an issue across the whole region.
- Further community assets and enterprising businesses were identified.
- Desire for further dialogue between communities and large landholders.
- Holiday homes and tourism management is not perceived to be an issue locally, however options for short stay accommodation outwith Forres could be beneficial eg. camping and bunkhouse.
- Farmers highlighted the importance of designated parking for walking (ensuring farm access points are not blocked).
- Learn new relationships with landowners.
- Ensure careful access to scenic sites of historic and ecological interest that is not detrimental to habitat and biodiversity.



Strategic Priorities

Using the information gathered at the events, we are developing key priorities for inclusion within the Finderne Local Place Plan to be detailed as part of an action plan.

Influence and dialogue

- Recognise the common and separate needs of communities within Finderne.
- Build on dialogue between local action groups, businesses, stakeholders and the local council.

Connectivity and interaction

- Facilitate community connectivity in a rural area through local events, digital infrastructure (broadband) and better information sharing locally.

Identity + character of settlements and place

- Recognise the rural character that makes Finderne unique.
- Enhance settlement character through street improvements, signage and careful development management, if applicable.

Housing (locality specific)

- Edinkillie / Dunphail area highlighted the need for housing options that enable people to live and work locally - supporting rural revitalisation, providing young people with choices. This may assist in keeping Logie School open.
- Rafford area would rather see no further development, but if it occurs, it should be within existing settlements.

Work, Tourism & Amenities

- Continue to improve village halls, to reduce running costs.
- Explore alternative uses for the churches eg, arts, co-working.
- Focus green space improvements to adjacent land next to halls incorporating play for all ages, access to toilets, planting and BBQ space.
- Support entrepreneurial businesses within the area with the tools to grow.
- Short stay accommodation outwith Forres.

Access and Transport, Active Travel

- Support road safety initiatives for all road users.
- Identify junctions that are dangerous and places where improved signage, grass-cutting and speed reductions could make the community safer.
- Explore and support transport on key routes at useful times to address current lack of public transport options.
- Manage parking in key location.

Recreational access

- Local way-finding, signposting and awareness of key routes such as the Dava Way for walking and cycling.
- Enable greater connectivity to key destinations.
- Provide greater accessibility to and through windfarms for recreational use, which will require greater dialogue with stakeholders.

Supporting ecology

- Protect existing natural assets.
- Ensure managed access to scenic sites of historic and ecological interest such as forests and rivers that is not detrimental to habitat and biodiversity.
- Ensure recreational sports are not to the detriment of local wildlife populations.
- Identify sites for further nature recovery.

Local energy generation

- Continue to maximise local benefit from local wind farms and remain openminded to other forms of renewable energy.

If you have further ideas or comments regarding information within this newsletter, please email; engage@collectivearchitecture.co.uk

Many thanks.

END OF NEWSLETTER



COLLECTIVE
ARCHITECTURE